

Quick User Guide

For GPS Tracker T28



Chapter 1 Product views

1.1 Product views



GPS Tracker T28 is a new type of GPS tracking gadget for car/boat/bulky goods . with build-in magnet, user can install the device within 10 seconds. With Quad-Band GSM connectivity, the device works anywhere in the world. With live tracking and previous track function, user can check the live track and previous track via smartphone anywhere anytime. With long battery life, user can use the device for two years at most without charging the device. You will enjoy a piece of mind with knowing exactly where your vehicle or valuable assets are.

1.2 Product interface



No.	Button	Function
1	Power	Power on/off the device
2	Indicator light	Indicator for status of Power, GPS and GPRS/GSM
3	Function button	Press function button to upload GPS location once
4	SIM card slot	Insert the SIM card into SIM card slot before using the device
5	USB port	Connect the USB port with 5V power via USB cable for charging
6	ID	ID for login the account
7	GPS antenna	Keep this part away from metal to avoid the interference

1.3 Indicator status

The device will enter into low power mode when the GPS location uploading interval is over 300 seconds. In low power mode, the device will power on for uploading the gps location data and power off one minute later. Then power on again and cycle.

Indicator \ Mode	Low power mode	Normal mode
Power indicator(red light)	Slow blink twice	Fast blink
GPS indicator(blue light)	Slow blink once	Fast blink when positioning, slow blink when not positioning

GPRS indicator(yellow light)	Slow blink once	Fast blink when positioning , slow blink when not positioning
Others	Press F button, yellow light slow blink once	

1.4 In the box

Item list	Accessories	Quantity(piece)
1	GPS tracker	1
2	Quick User Guide	1
3	USB cable	1

1.5 Warnings

1. Please check device model and accessories after received the package, if product is found cracked, deformed, or has other anomalies, please stop using it immediately and contact the seller or manufacturer.
2. Please Insert 2G SIM card into device, the device only supports Micro SIM card, which also need GSM band and GPRS enabled.
3. The device will power on and rings after pressing the power button for 3 seconds. Lights on when Press SOS button under normal working status. Lights off after two drops when battery is in low power. Please reuse after charging.
4. The device could not be turned off after power on and set the center number. If you need to turn it off, please send shutdown command via SMS command or APP.
5. Please change the SIM card only when the device is power off, otherwise SIM card may be burned.
6. Check GSM signal after turned on, please refer to indicator lights status for details.
7. Don't disassemble or modify the product, to avoid damage to the product.
8. If the product is damaged as a result of breach of the warnings above, we will not bear any legal responsibility.

Chapter 2 Before use

2.1 Install the SIM card

Install the SIM card as below,then press the power button "P" for 5 seconds to start the device.



2.2 Setup apn for access of network

SIM card in some countries need to setup apn before access to GPRS network, please contact the SIM card operator or check the website of the SIM card for the apn information.

	Command	Example	Reply SMS
Setup APN	pw,123456,apn,apn name,user name,password,MCCMNC#	apnname=wap.tmobil.cl, user name=wap, password=wap, MCC=730, MNC=02, then the SMS will be: pw,123456,apn,wap.tmobil.cl,wap,wap,73002#	apn:wap.tmobil.cl;user:wap;passwork:wap;userdata:73002.

2.3 Install the app

User can check GPS tracker remotely via android/iOS app or PC,

For Android,

You can download the app from "play store" by searching "Aibeile"

For iPhone,

You can download the app from "app store" by searching "Aibeile"

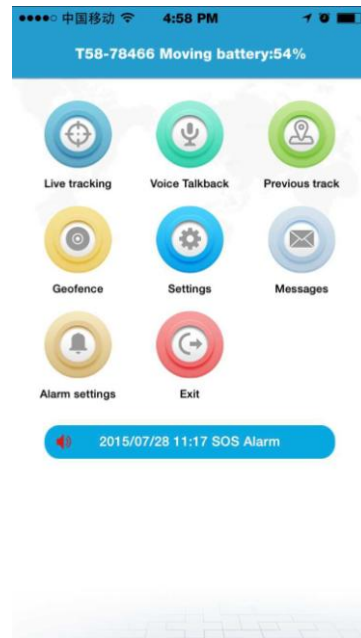
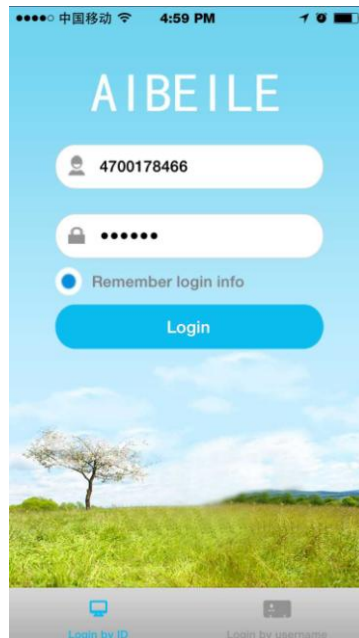
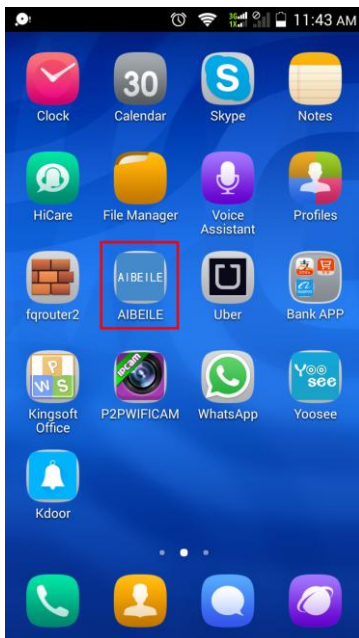
For PC: <http://en.i365gps.com/>

The app can also be acquired by scanning the QR code below,



2.4 Login the app

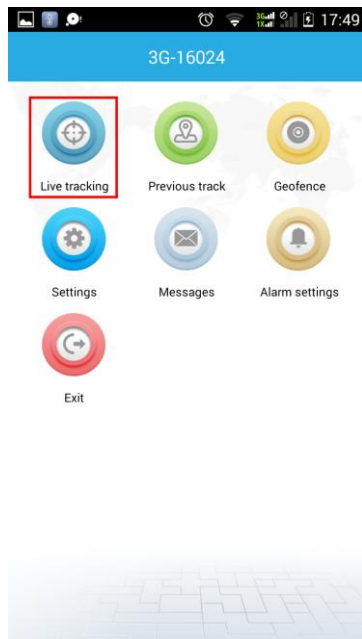
Click the icon “EzTracker” on desktop and then login the ID and the password of the device (the default password is 123456). User can login by ID or by username, user need to contact reseller to register an username if need to login by username.



Chapter 3 Start to use

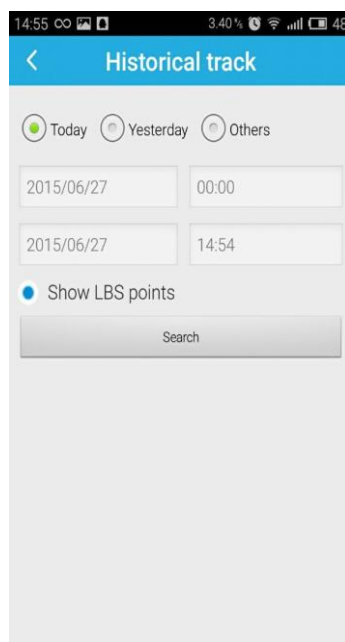
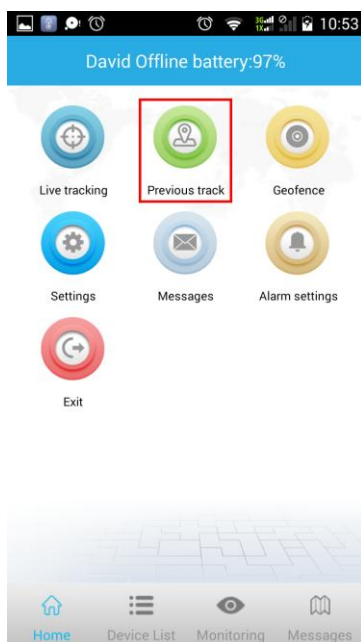
3.1 Live tracking

Live tracking can not only track the position of the device, but also can track the position of smartphone, user can click “+” and “-” to zoom in and zoom out the map.



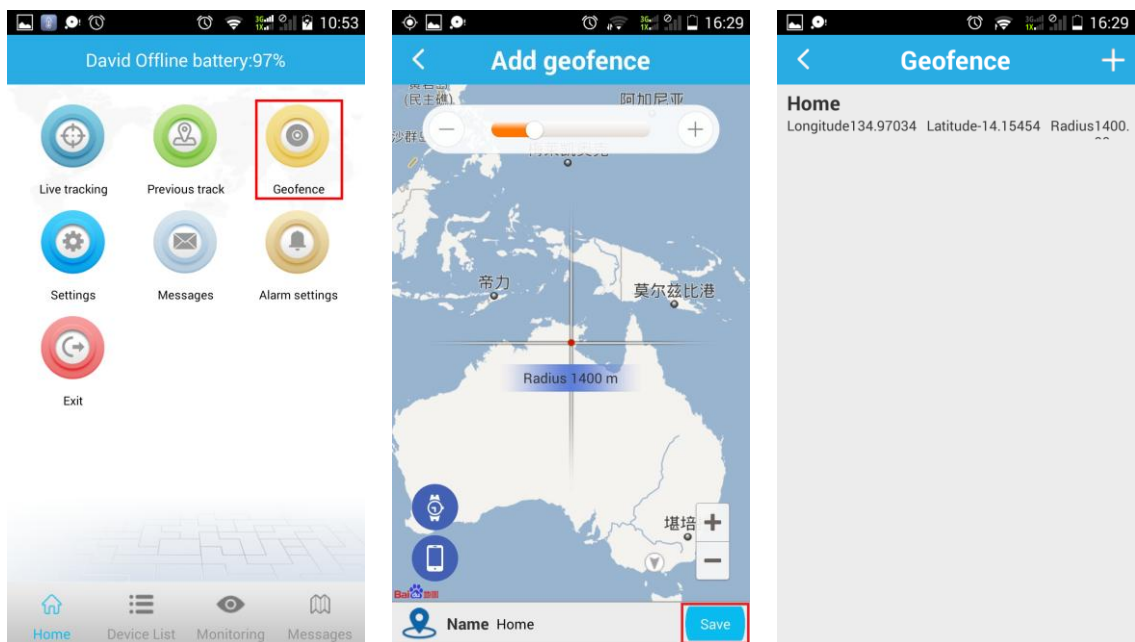
3.2 Previous track playback

Previous track could find the route map for nearly three months by choosing the beginning and ending time.



3.3 Geofence

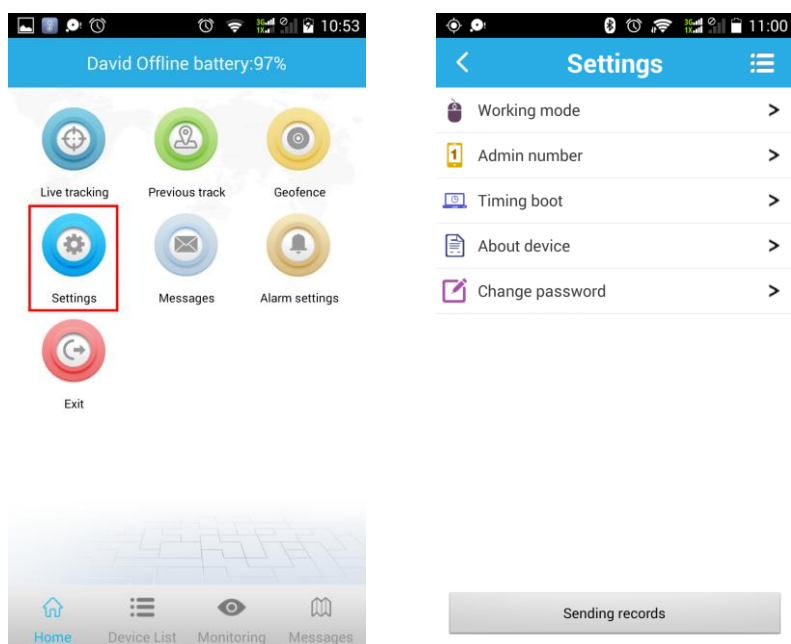
Click on the upper right corner “+” under main menu for setup geofence. Then the device will lock device’s present position as center automatically, then adjust the radius distance by “+” “ - ” on map (default radius is 100 meters, recommended radius is 500 meters) .Save settings by clicking “Save” . The device will send message when the device is out of the range.



3.4 Message

All received messages of can be found in “Message”, such as emergency call, offline alarm, low power alarm, geofence alarm and etc.

Chapter 4 Settings



4.1 Setup admin number

Click“admin number” and input the admin phone number. The device will send the alarm information to this number. The alarm information includes lower power alarm, Geo-fence alarm and other alarm.

4.2 Setup working mode

The device can setup GPS data uploading interval in working mode settings, which it is related to the standby time of battery.

1. Tracking every 30 seconds: Fast positioning mode and standby time is 45 hours.
2. Tracking every 10 minutes: Standard positioning and standby time is 11 days.
3. Tracking every 1 hour: Power saving mode and standby time is over 20 days.
4. Others: Tracking time can be setup here, if set tracking once every day, the standby time is 2 years

4.3 Timing boot

User can setup a scheduled time and then the device will boot at that time.

4.4 Device information

It includes display device name, device number and duration of platform.

4.5 Change password

User can change the password of the device for safety reason.

Chapter 5 Troubles & Shootings

Troubles	Shootings
Device is not enabled	Please check : 1. ID number have not been added to the platform,contact supplier for support. 2. SIM card is not installed correctly
Device is offline on APP	Please check if : 1. apn is not setup or SIM card no singal 2. GPRS is canceled or not enabled 3. The SIM card is in debts
Position is not accurate	The device support two modes of positioning, GPS is mainly for outdoor positioning, the accutracy is around 10 meters, LBS is mainly for indoor positioning, the accuracy is around 500-1000 meters.